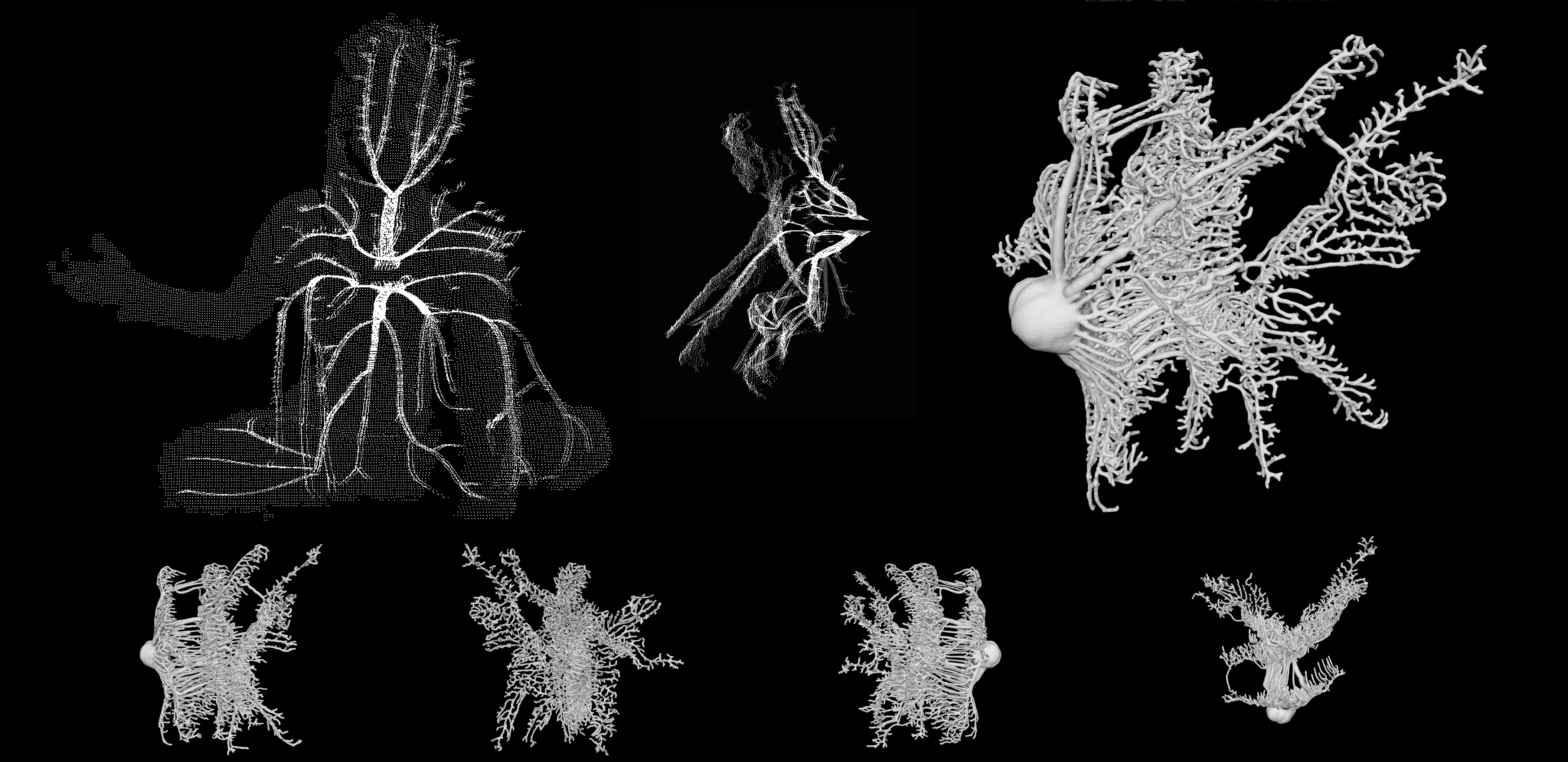
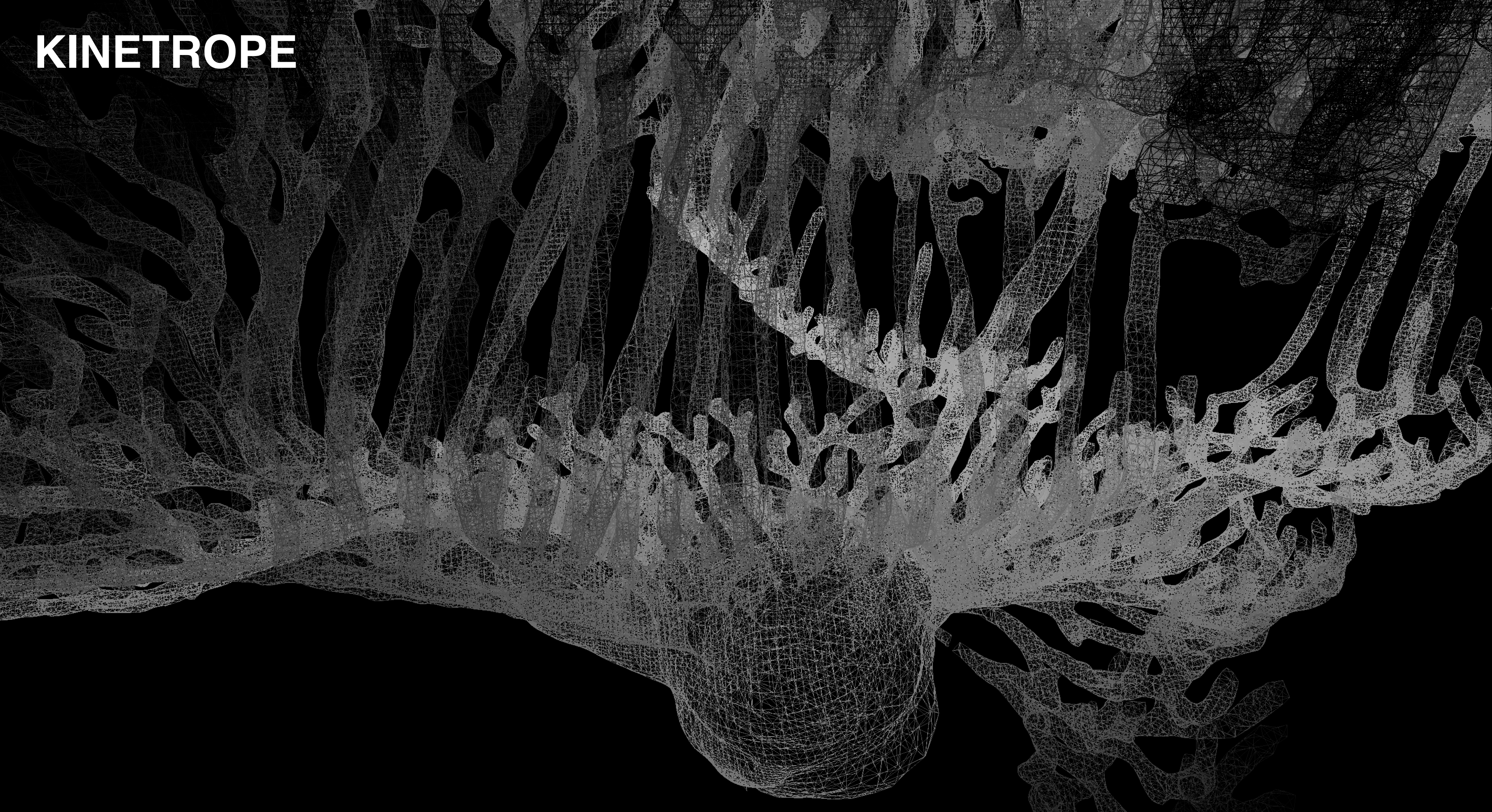


KINETROPE



kine – Greek κινεῖν (kinein) – movement
trope - Greek τροπός (tropos) – turning

Tropism refers to the turning of all or part of an organism in a particular direction in response to an external stimulus, such as sunlight or gravity. A Kinetropes is a plant-like life form born in virtual space, that grows towards the motion of another. Through the creation of this specific growth algorithm, new relationships and choreographies spanning across the boundary to the virtual become possible.

The motions of a body in physical reality as sensed through a depth camera, are used as scaffolding on which the virtual lifeform can grow. The process happens in real time, giving the moving body a chance to witness the growth process and respond. The choreographic potential arises out of this dynamic relationship between physical body and virtual body; an interconnected exchange of motions and impulses. The dancer becomes a growing tree, and the tree becomes a dancer

I am. The tree is.
We are both close enough, to see.
We push and pull each other.

L i s t e n
On Watching, I see you there, out on a lake. Young and old, elders me see.
My Pulling up roots a stretching strength that down fills my whole form.
I want secret way to bring of it rock fold back and and hold hands.
So I cry tear lift up my feet earth clouds with and all dance my might, around, windows, time, stays, ice.
The How soft it as shakes feathers, me and the how cracking
I and I and the wild wild way that you you can branches, leaves, wind, dreams, see.
I the the From tear up ground, fire inside, and the the and dance around, ground, fire, out.
I move fly, silence and and I stay speak, squeaks, still.
I sit and I